



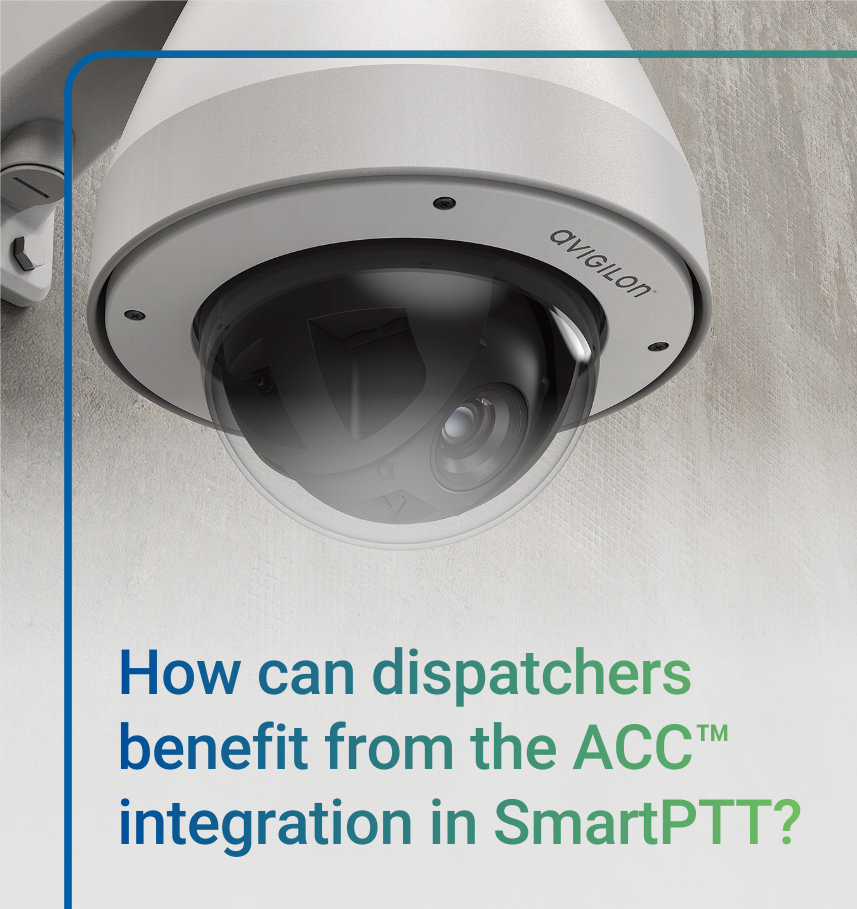
Avigilon Control Center integration in SmartPTT

The integration enables dispatchers to open video streams in the dispatch console to gain situational awareness in an area.

- Add cameras from ACC™ into your dispatch console
- Place IP camera icons on the GPS map
- Easily determine the nearest camera to a worker's location
- Gain situational awareness in any situation

**Increase a dispatcher's
situational awareness for
employees in the field**





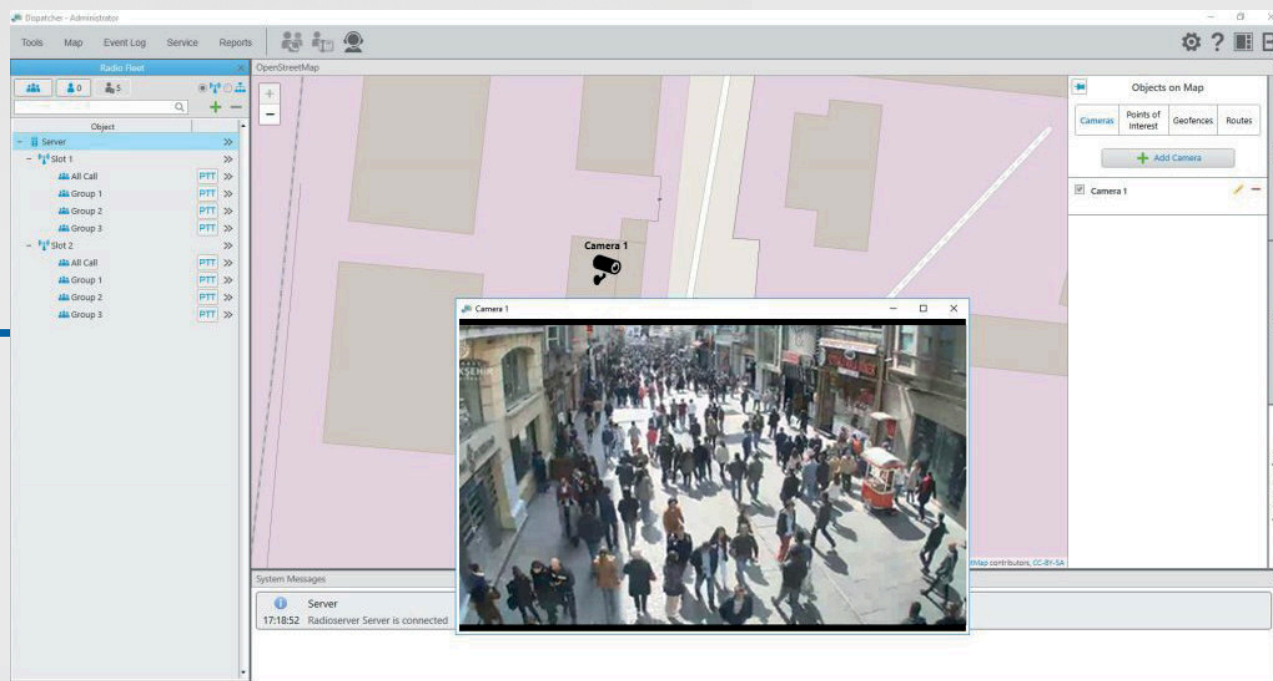
How can dispatchers benefit from the ACC™ integration in SmartPTT?

In addition to voice communications and locations of radio users, dispatchers can also observe perimeters and other access points.

When a radio user has an emergency, a dispatcher can choose cameras near the user to gain a visual understanding of the situation.

How many guards need to be dispatched to deal with a disruption? A dispatcher can quickly determine this based upon the video stream and respond appropriately.

In case of an intrusion alarm, a dispatcher can first verify it wasn't a false alarm, by viewing the camera feed. This eliminates unnecessarily dispatching workers to distant locations.



www.smartptt.com

THE SMART CHOICE FOR YOUR FUTURE



Elcomplus, Inc. 290 NW 165th St, Ste P-800A, 3rd Flr,
Miami, FL, 33169, USA
sales@smartptt.com / +1-786-362-5525