



Integrated Solution for MOTOTRBO™

SmartPTT



Indoor Tracking

SmartPTT Indoor Tracking allows dispatchers to monitor the position of employees indoors, easily switch between floors for multi-level buildings, and control routes and geo-fencing zones inside buildings even when there is no GPS coverage.

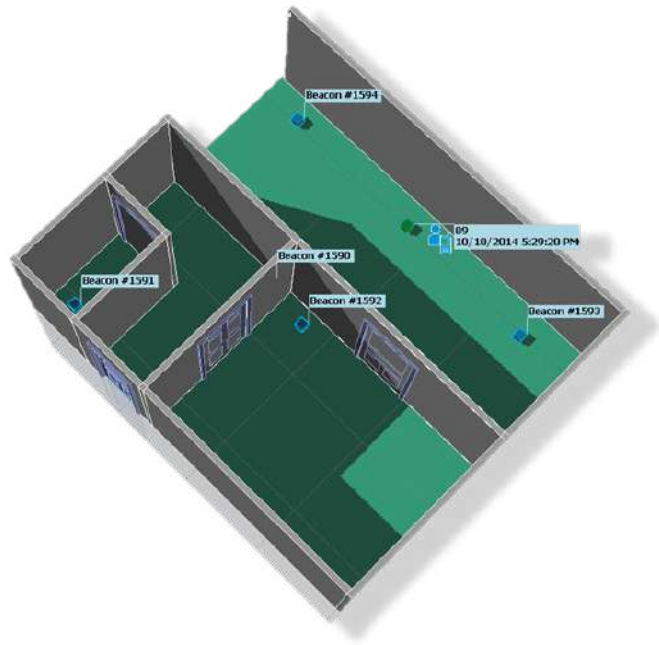
FUNCTIONALITY

- Real-time indoor tracking system for MOTOTRBO subscribers
- Animation of the route of a subscriber
- Geofencing Rules and Alerts
- Change easily from one floor to another, in the case of multi-level buildings
- On-route/off-route control
- Show subscriber movements on 2D or 3D maps

BENEFITS

Employee Safety

In case of an emergency situation, you'll know the exact location of your staff. This helps minimize response times that could be lifesaving.



Employee Accountability

With the advanced system of rules and alerts, you can set guard patrol routes for buildings and premises, and the dispatcher can be informed about any deviations from the route.

Easy Deployment

Data from the beacons is transmitted over the radio channel, so you don't need any advanced network infrastructure. It ensures simple and low-cost system deployment in buildings, mines, tunnels, and industrial structures.

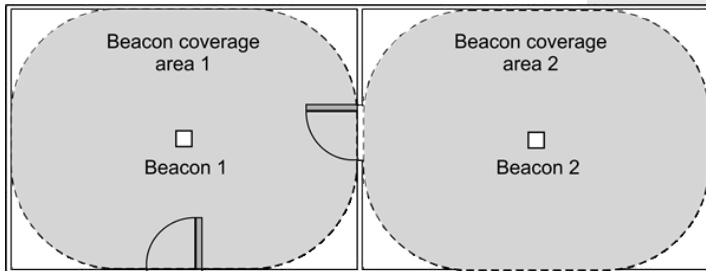
Independent operation

The beacons operate on batteries, which require replacement every 1-2 years (varies per beacon manufacturer and beacon settings).



INDOOR POSITIONING CASES

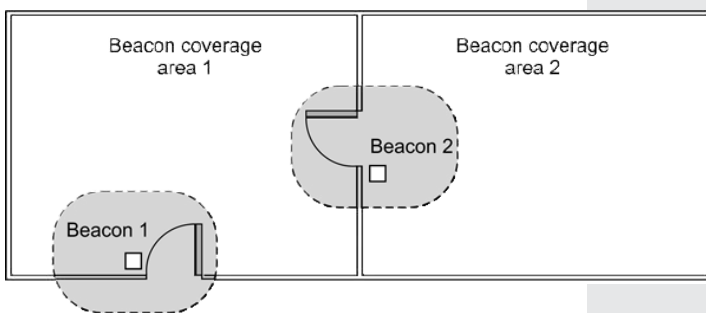
Position monitoring



Each beacon is installed in the center of a room and completely covers it. For large rooms and halls, multiple beacons are installed in the way that their coverage areas are not overlapping. For this, beacon power is adjusted and their placement is determined with respect to that purpose.

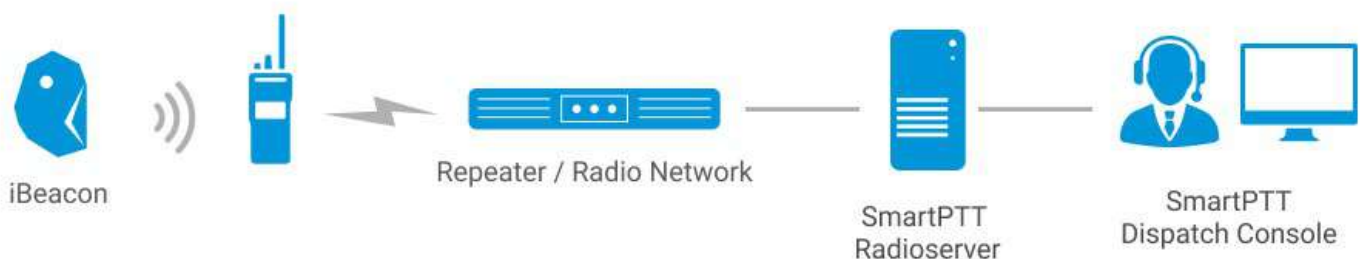
When people enter the room, their radios detect signals from the beacon. They retransmit those signals to SmartPTT so operators receive information of subscriber presence and their movement in real-time. With rules and alerts configured, operators may receive additional notifications on subscriber entering/leaving the area, absence of motion, and emergency.

Gate and key point monitoring



Beacons are installed next to doors, gates or other points of interest. Their coverage is minimized (with power adjustment) to track subscriber entering/exiting proximity with greater accuracy.

When people enter or exit the location, their radios detect beacon signals and retransmit them to SmartPTT. With this, operators are aware about people's location inside facilities.



REQUIREMENTS

- Enhanced MOTOTRBO portable radios with built-in Bluetooth receivers and Indoor Tracking licenses.
- Off-the-shelf Bluetooth iBeacons (i.e. Estimote Proximity Beacons). In addition to the Motorola Indoor Tracking solution, SmartPTT can work with third party option boards and beacons provided by Kilchherr (K-TERM 42 and K-TERM 72) and BluFi (Connect RTLS).
- Indoor Positioning option enabled in the SmartPTT license key.



Motorola professional
radio application partner

www.smartptt.com

sales@smartptt.com

12

More than 12 years
in the market of software

90

Customers in over 90
countries worldwide

250

More than 250 dealers
around the world

2000

More than 2000
customers

THE SMART CHOICE FOR YOUR FUTURE