

SMART
DISPATCHING SYSTEM



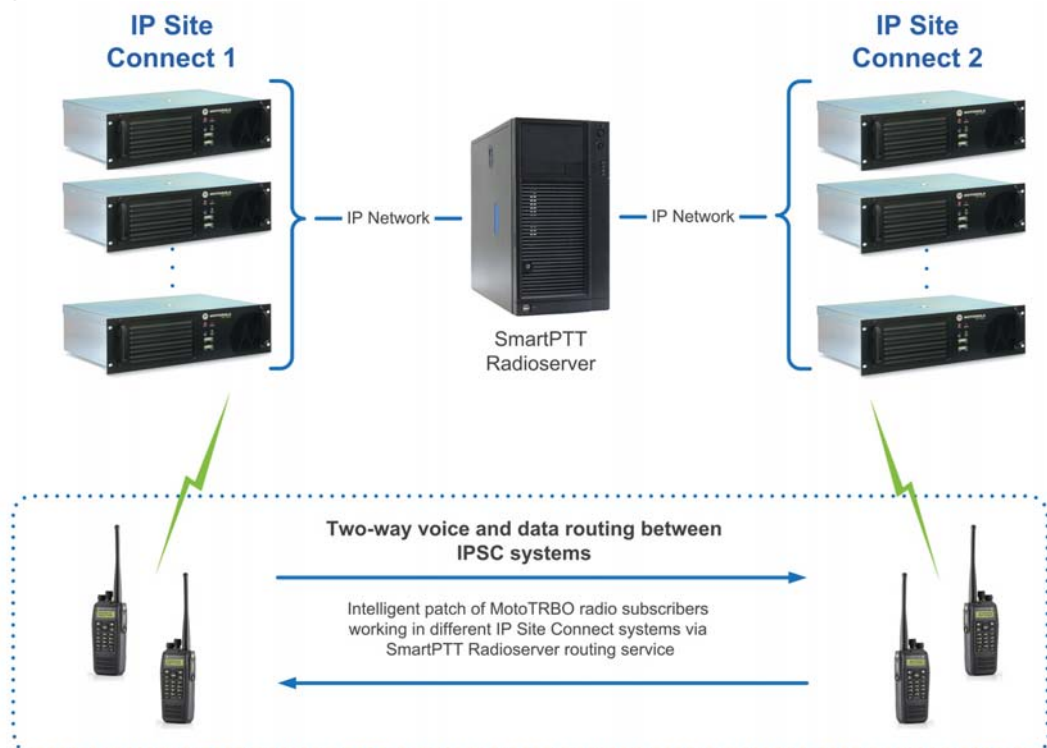
GOING BEYOND IP SITE CONNECT

SmartPTT routing service for IP Site Connect systems

SmartPTT routing service for IP Site Connect allows joining multiple IPSC systems into single radio network. The routing service is implemented in scope of SmartPTT Enterprise Radioserver and provides intelligent means of patching for voice and data streams between IPSC systems.

Advantages of the routing service for IP Site Connect

- Breaks the limit of 15 repeaters per IP Site Connect;
- Direct connection to the repeaters via IP;
- Short voice delay for routed call (from 60ms);
- Voice quality is not harmed by the routing service (no double voice encode);
- Selective voice and data routing;
- Convenient tool to manage profiles for predefined routing configuration.



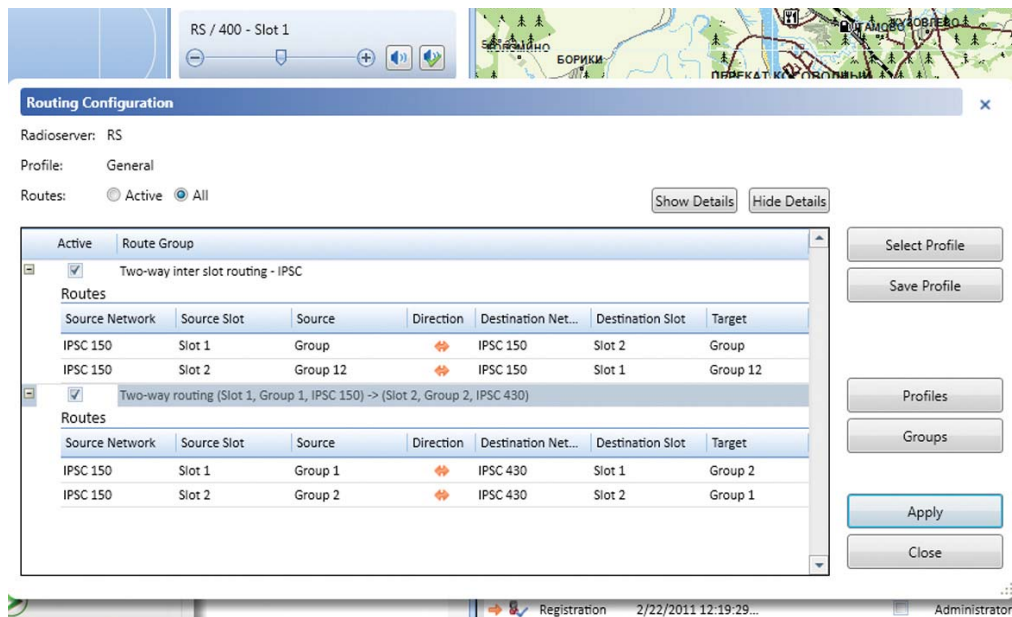
Rules for voice and data stream routing are defined by the routing table.

Routing rules use following criteria to patch streams between IP Site Connect systems:

- Source and destination IPSC network;
- Source and destination IPSC slot number;
- Source and destination talk group;
- Source and destination individual radio.

The routing table is managed by visual tool integrated into SmartPTT dispatch console

Routing configuration in SmartPTT is specially adjusted for easy management of complex route tables consisting of multiple records. The service provides opportunity to apply predefined routing profile completely describing all the rules of IP Site Connect systems interconnection or dynamically add necessary route just in several clicks.



Routing Profile – saved configuration of all routing rules specific for the given interconnection schema. Different routing profiles are defined for industry specific requirements for radio communication. For example, it can be general profile, profiles to perform some planned maintenance works, profiles to apply for some known emergency cases.

Route Group – group of several route records. Route groups are used to provide structured presentation of routing profile. In the routing configuration window groups can be easily activated or deactivated to apply or stop interconnection defined by group route records.

SmartPTT – Dispatcher Software for MotoTRBO™ Professional Digital Two-Way Radio System

SmartPTT main features

■ Voice dispatch of multiple radio networks over IP

■ GPS Monitoring

■ Telephone Interconnect

■ Voice and event logging

■ Data transmission (text messages, telemetry, status control)

■ Routing service

